

# **ARC260**

## **User manual**

*Manual version 2.0 build 1*

<C> 2025 BuTel software BV/LLC The Netherlands – all rights reserved

[www.butelsoftware.com](http://www.butelsoftware.com)

## Contents:

### 1 Introduction and quick start reference

- 1.1 Software Installation
- 1.2 Enter registration information
- 1.3 Connecting the scanner to your PC

### 2: Using the memory channel editor:

- 2.1 General editor options
- 2.2 Edit multiple cells
- 2.3 Using the FILL option
- 2.4 Using the FILL SERIES option for ALPHA tag columns
- 2.5 Using the clipboard
- 2.6 Keyboard shortcuts
- 2.7 EasyFill
- 2.8 Using Paste Frequencies for importing frequencies of the internet
- 2.9 Import/Export data
- 2.10 Import CSV files
- 2.11 Checking for software updates
- 2.12 Sorting Data
- 2.13 Find/Remove Duplicates
- 2.14 Read data from Scanner
- 2.15 Send data to Scanner
- 2.16 UBC125 airband steps logic

### 3 Radioreference Database import

- 3.1 Conventional Import
- 3.2 Options

### 4 General information and troubleshooting

- 4.1 Revision history

## **1: INTRODUCTION:**

ARC260 is a collection of Windows software package for easy programming Uniden Bearcat scanners.

This manual describes the following software packages:

- ARC260 for the Uniden (U)BCD160Dn and (U)BCD260DN

Any differences are clearly marked. Screenshots may look different. Some screenshots were taken from the ARC125 software.

System requirements:

- 7/8/10/11
- Software is NOT IMac/Mac OS/Ipad/Ipod compatible
- Minimum display resolution settings: VGA 1280x800
- Small Fonts
- USB cable (normally included with the scanner)

### **Scanner USB connection:**

A USB cable is required to connect the receiver to your PC. USB drivers are included with the software, for driver support please contact Uniden at [www.uniden.com](http://www.uniden.com), drivers are included 'as is' and no support is given for using the 3<sup>rd</sup> party drivers.

**ARC Quick Start Reference:**

- Install the software (1.1)
- Enter the registration information (1.2)
- Connect the scanner to the PC (1.3)
- Setup communication port number (1.4)
- Software is ready for use

IMPORTANT: YOU MUST ENTER A VALID REGISTRATION CODE TO MAKE FULL USE OF THE SOFTWARE. THE REGISTRATION CODE IS SEND TO YOU BY E-MAIL (IF YOU PURCHASED ONLINE) OR CAN BE FOUND IN THE USB BOX.  
DO NOT LOSE THIS INFORMATION; YOU NEED IT FOR FREE UPDATES!

## **1.1 Software installation:**

The ARC260 software is available as Internet download or on a USB drive.

Win 7/8/10/11 users: You must be logged on as administrator to install and use ARC260.

Internet download:

The downloaded file contains all the necessary files for installation. Run the setup.exe file and the installer will automatically start. If you previously installed the software the installer will automatically update the older version. You do not need to uninstall any previous versions.

USB:

Insert the USB drive in a free USB slot. Open your file explorer and browse to the data on the USB drive. Locate setup.exe and double click it to install ARC260.

### **Software un installation:**

ARC260 will automatically add an uninstall option. Use the Windows Control Panel for uninstalling the software. Backup your work before using the uninstall option.

## **1.2 Registration:**

After installation of the software, the program runs in DEMO mode. You must enter a valid registration code to activate the software. In DEMO mode the software does not upload data to the receiver.

Internet download: customers that purchased using the Internet download option, received a registration code by e-mail. It is VERY IMPORTANT that you store the registration code in a safe place. If you loose the registration information you must buy a new registration code.

USB: in the jewel case of the USB you find the registration information. Store the case in a safe place.

Enter registration:

Start the software by selecting START \_ PROGRAMS \_ BUTEL \_ ARC260 \_ ARC260 Software. After the start screen, select HELP \_ REGISTER in the menu.

Enter the key1 and key2 information: the name is case sensitive!  
No spaces are allowed. After entering the registration you must restart the software to enable the upload option.

### **1.3 Connect your receiver:**

The scanner is programmed using the built in USB port. Connect a USB cable from the receiver to the PC and install the USB driver included with the software.

Drivers:

If you purchased the download version first install the software and then the scanner drivers can be found at :

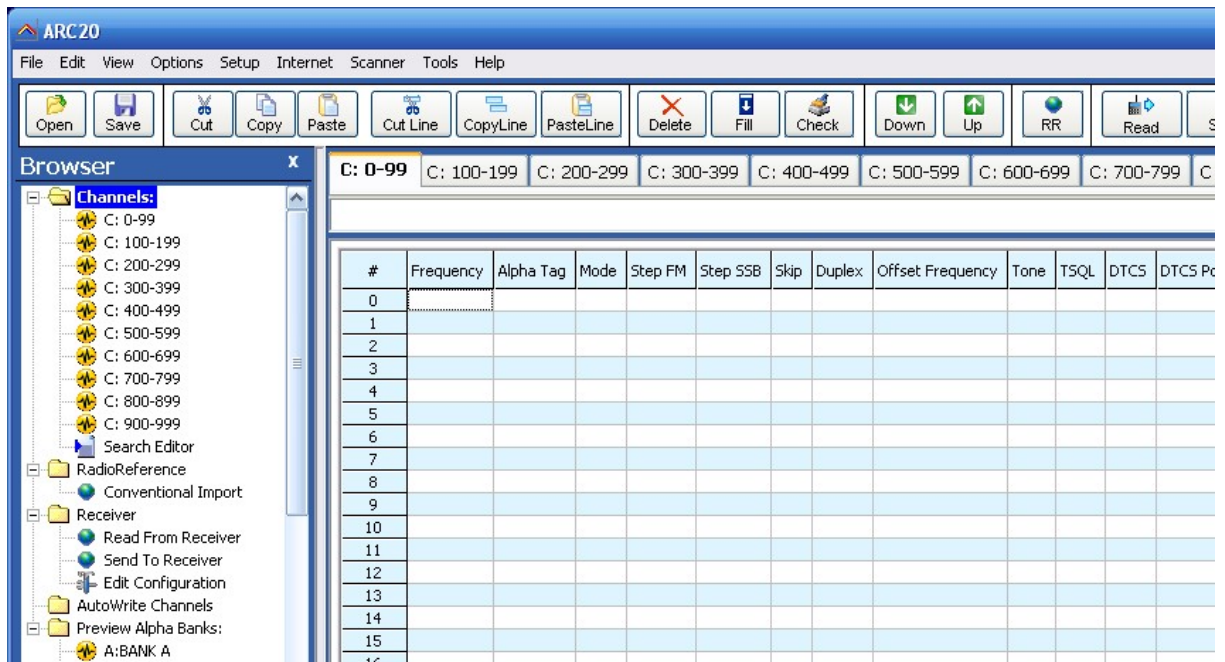
C:\program files\butel\arc260

Drivers are supplied 'as is'. For support contact Uniden. Drivers must be installed from the Windows device manager. To open device manager open the Windows run prompt and type in: devmgmt.msc followed by Enter

## **2: Using the memory channel editor:**

ARC260 includes the most versatile memory editor available on the market.

This section describes most options available in the memory editor; in order to use the full power of the editor it is important that you read this section carefully. The editor does not require that a scanner is connected.



The memory editor has a clear layout:

The top section has a standard Windows menubar and a toolbar. Most options found in the menu also have a 'shortcut' in the toolbar. If the mouse is moved over a toolbar button a help text is shown giving a brief description of that button.

Below the grid a dynamic help text is shown. This help text shows information about the selected item, it also shows any shortcuts that can be used.

On the left there is a tree for easy browsing the software. The tree has shortcuts to all the important section of the software.



## **2.1 General editor options:**

You can edit data in the grid by typing in data. For example to enter a frequency click on the frequency column and type in the frequency. The software will automatically select edit mode when you type a character. Edit mode is shown by a yellow or blue background of the selected field.

You can also use function button F2 or a double click to enable edit mode.

If the data in a field is limited to 2 or more 'fixed' selections the software will automatically show a dropdown list to select the data. Most columns also support keyboard shortcuts, for example 1= On, 0= Off, F= flash etc. The help text dynamically shows the shortcuts. You will also see shortcuts to the available selections above the grid.

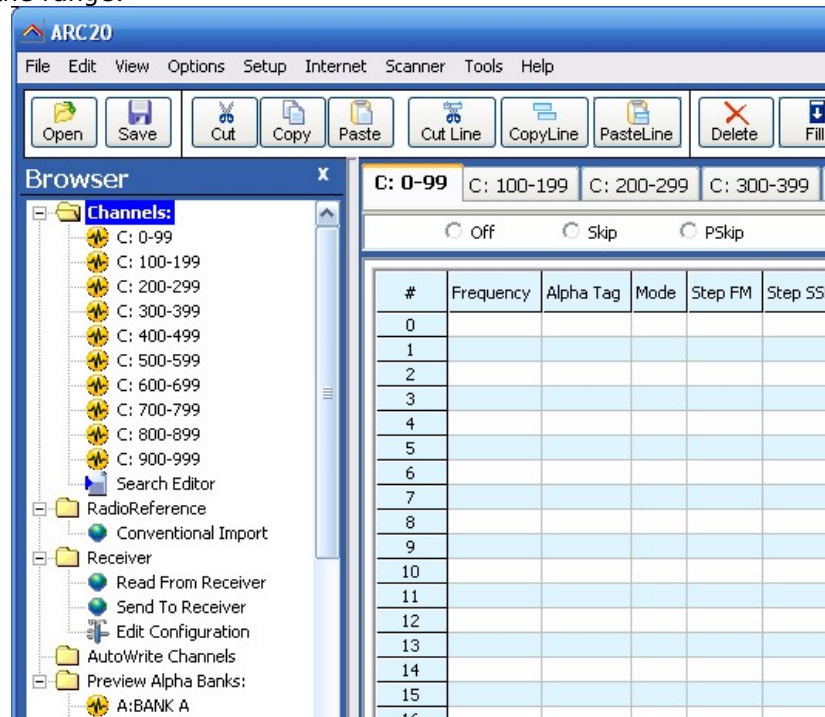
To correct a mistake use the Escape button, this will restore the previous data.

## **2.2 Edit multiple cells:**

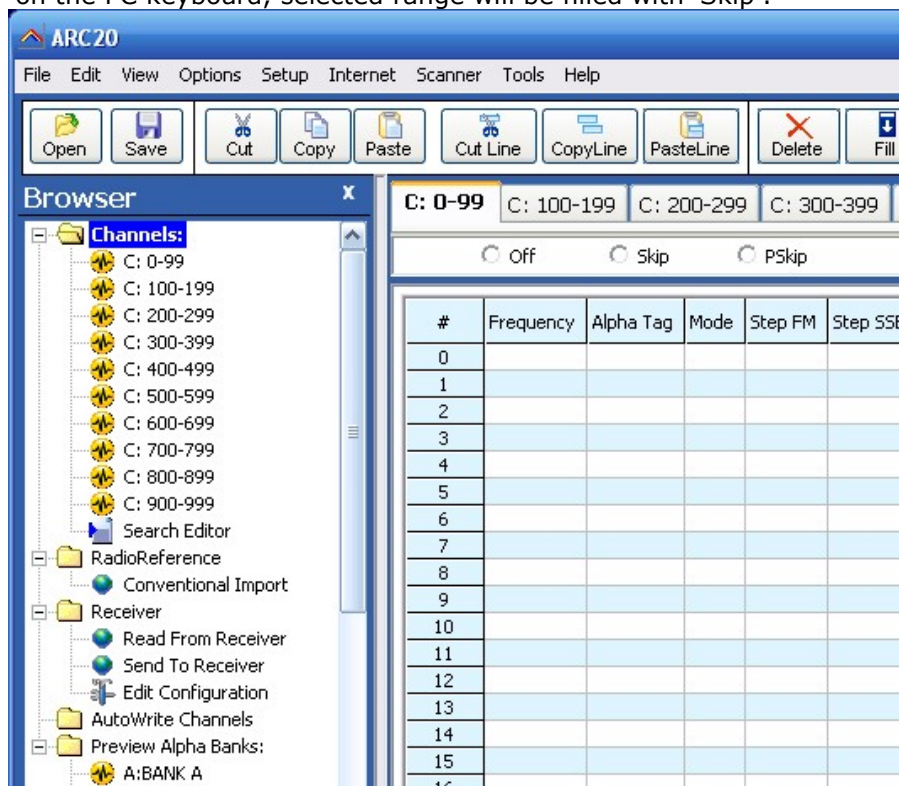
You can very easily modify or edit data in multiple cells:

Example setting Skip to On for selected range:

1. select the range:



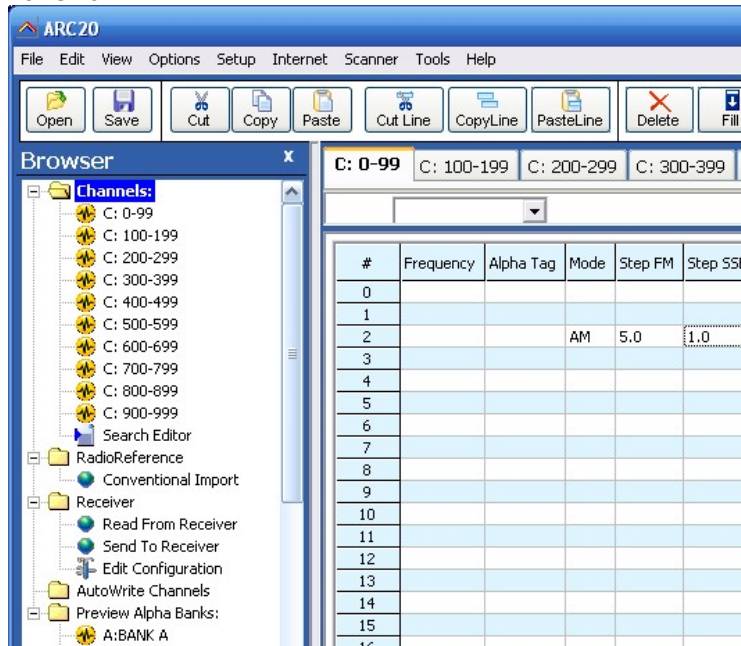
- 2: press 'S' on the PC keyboard, selected range will be filled with 'Skip':



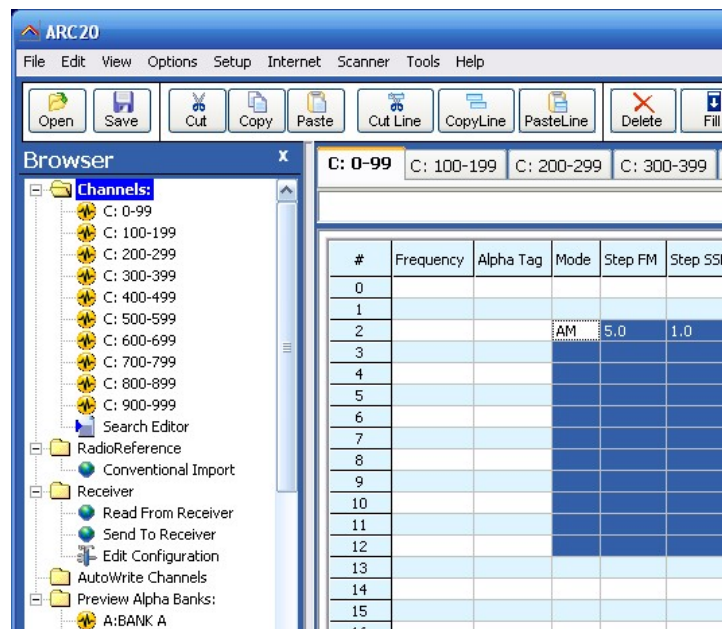
## 2.3 Using the FILL option:

Another powerful option is the FILL option. Fill will copy the data from the first selected row to the remaining selected rows:

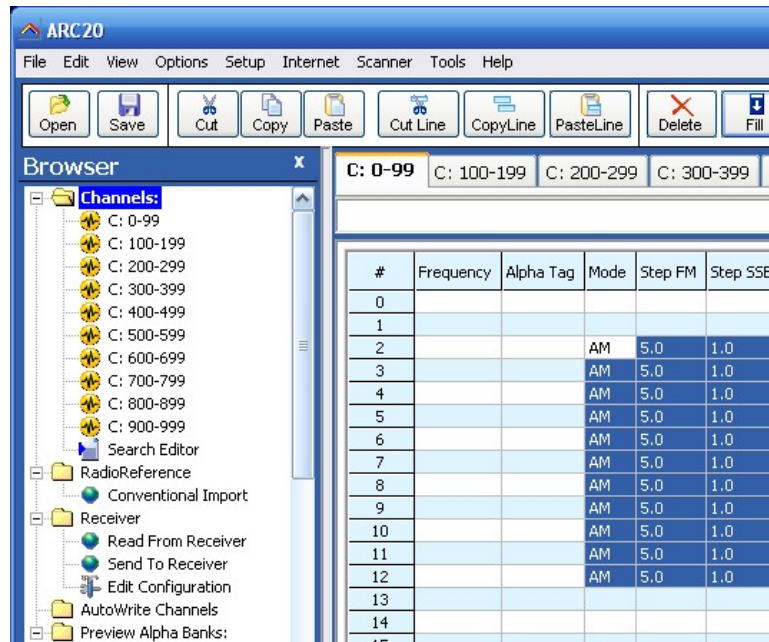
1. Program data in one row:



2. Highlight the range:



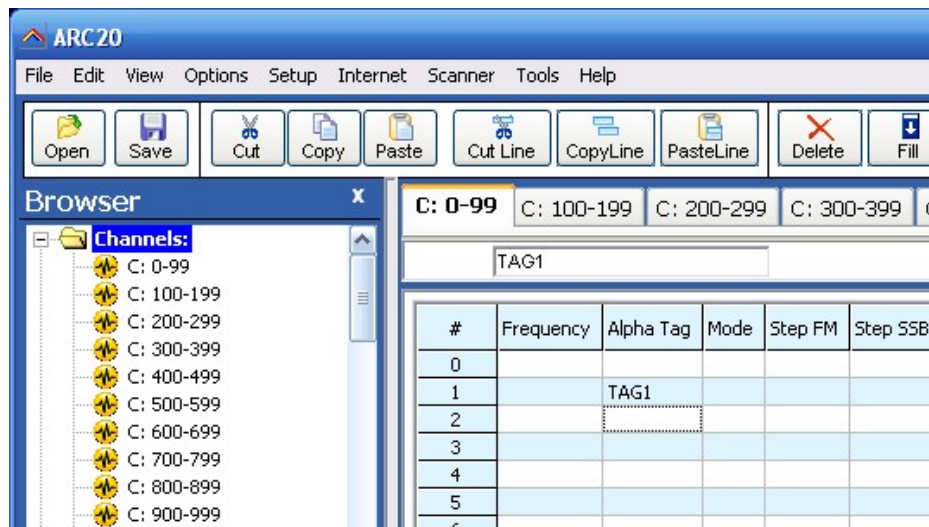
3. Press the 'FILL' in the Toolbar:



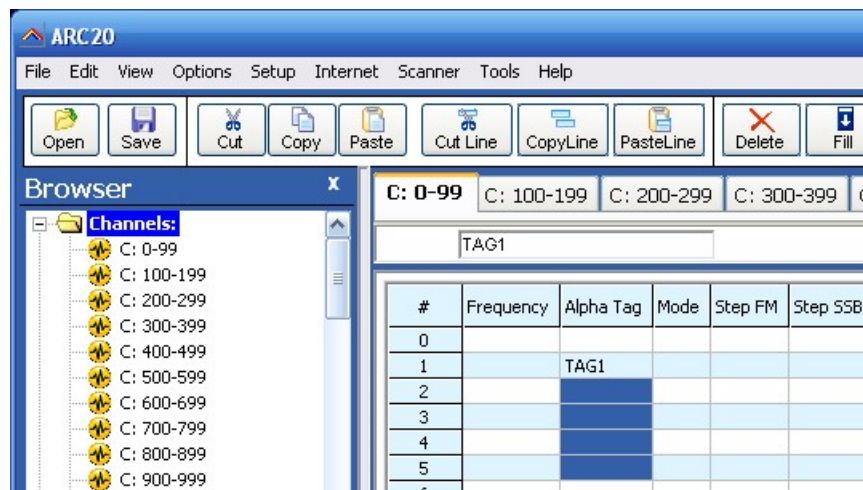
### **2.4.1 Using the FILL SERIES option for ALPHA tag columns:**

Another powerful option is the FILL SERIES option. Fill series will copy the data from the first selected Alpha tag row to the remaining selected rows and automatically increase the number:

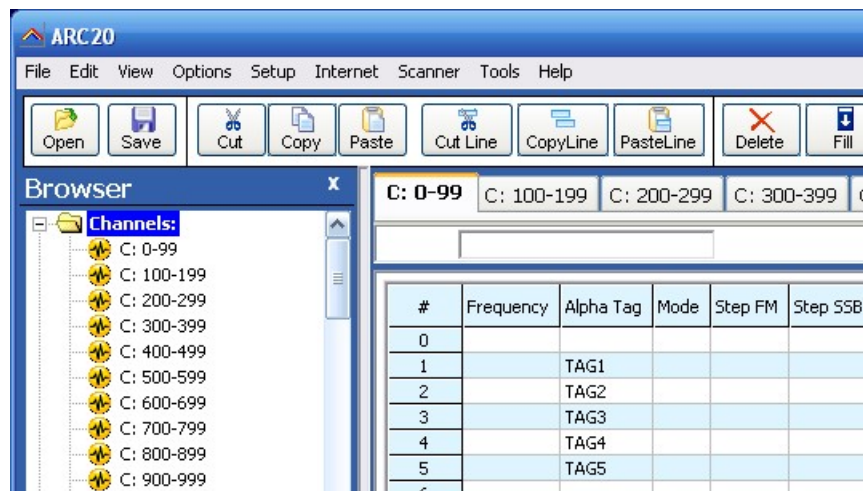
1. Program data in one row:



2. Highlight the range:



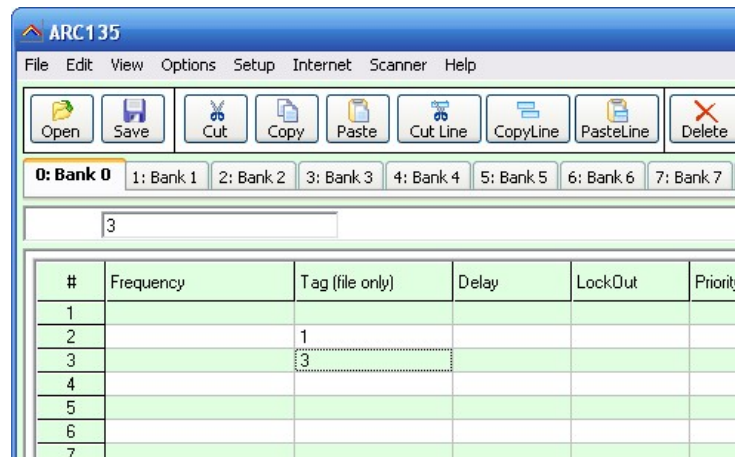
3. Select Options \_ Fill Series:



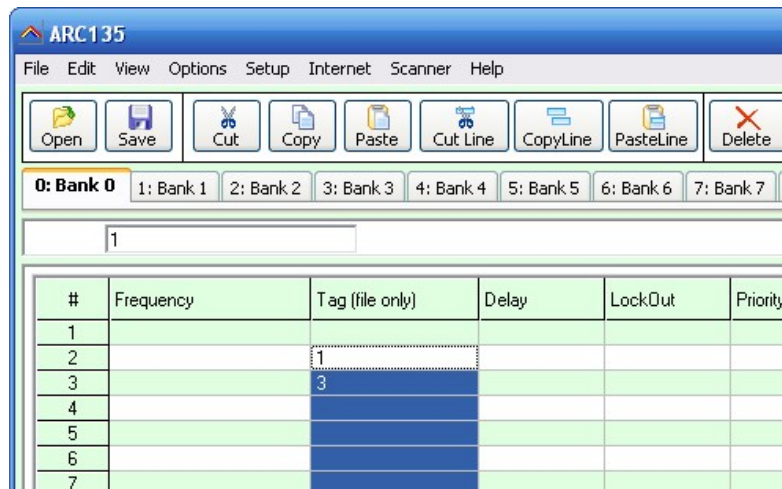
### 2.4.2 Using the FILL SERIES option with step:

Another powerful option is the FILL SERIES option. Fill series will copy the data from the first selected Alpha tag row to the remaining selected rows and automatically increase the number:

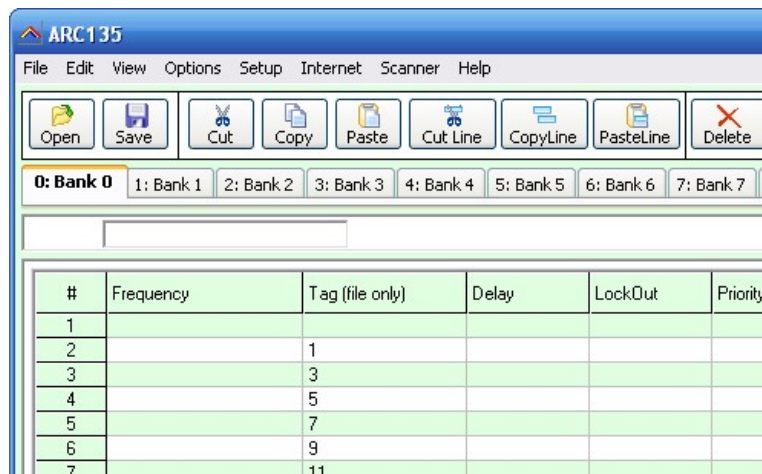
4. Program data in two rows:



5. Highlight the range:



6. Select Options \_ Fill Series:



## **2.5 Using the clipboard**

In the memory editor grid you can use the standard Windows clipboard options. In the toolbar shortcuts are available for cut, copy and paste options. You can also use the keyboard shortcuts CTRL C, CTRL X and CTRL V. Use these options to paste data from other applications like Excel or within the object grids.

An additional clipboard option is available that will automatically select entire lines (Cut line, copy line and paste line).

To use these extra options, click any cell of a memory channel then select cut/copy/paste line. To paste in a different memory channel, select any cell in that memory channel, then select paste line, ARC260 will automatically align the pasted text.

Important: while pasting data make sure the data is valid for the column you want to paste data. Example: you cannot paste WFM in the step column.

## **2.6 Keyboard shortcuts:**

Most columns also support keyboard shortcuts, for example:

0= Off

1= On

F= Off

N= On

S= Skip

F=Flash

A = AM

F = FM

See dynamic help text in the software for more information.



## **2.7 EasyFill**

EasyFill is a simple but powerful option that lets you program data in a range of channels with only a few mouse clicks. Additionally you can use EasyFill for quickly program a range of frequencies in a memory bank so you can use a memory as a search bank.

Select EasyFill from the Options menu or use the EasyFill toolbar button to display the EasyFill window:

The screenshot shows the 'Easy Fill' dialog box. It has two main sections: 'Select Channel Range' and 'Fill Range With'. In the 'Select Channel Range' section, 'From channel' is set to 1 and 'To channel' is set to 100. There are 'Default' and 'All C' buttons. In the 'Fill Range With' section, there are several options: 'Frequency' (unchecked), 'Tag' (unchecked), 'Trunk' (unchecked), 'Lockout' (unchecked), and 'Delay' (unchecked). The 'Frequency' section shows 'Start: 0400.0000 MHz' and 'Step: 10.0 kHz'. The 'Tag' section shows a text box with '0' and a 'Fill' checkbox. The 'Trunk', 'Lockout', and 'Delay' sections show dropdown menus set to 'Off'. At the bottom are 'Help', 'Apply', and 'Cancel' buttons.

In the top frame the channel range is selected. DEFAULT will set the start and end channel of the selected bank.

In the 'Fill Range With' frame you select the data you want to program in that range. If you want to set the mode for all selected channels to WFM select the MODE check box then select WFM and select APPLY, this will program WFM in all selected channels. You can select more the one check box.

If the Frequency check box is selected you can set a start frequency and a step. The software will automatically calculate the frequencies for the selected channel range.

Example: Frequency is set to 88.000 MHz, step is set to 50 kHz and channel range is 1-100. If you select APPLY the software will program 88.000 in channel 1, 88.050 in channel 2, 88.100 in channel 3 etc.

Fill series: for the TAG option you can also set the fill series option. Fill series will search for a number in the tag and use that number to 'calculate' the tags in the selected channel range.

Example: in the tag box the tag is set to 'Police 1'. The channel range is set to 1-100.

If fill series is selected, the software will automatically program 'Police 1' in channel 1, 'Police 2' in channel 2, 'Police 3' in channel 3 etc. See also section 2.9.

The number of characters of the tag box is shown in blue.

## **2.8 Using Paste Frequencies for importing frequencies of the internet:**

With ARC260 you can very easily import frequencies from any website.

- Start the ARC260 software
- Open you internet browser and open a website displaying frequencies you want to import , for example:

Scanner Frequencies and Radio Frequency Reference for Federal - Microsoft Internet Explorer

Bestand Bewerken Beeld Favorieten Extra Help

Vorige Zoeken Favorieten

Adres <http://www.radioreference.com/modules.php?name=RR&aid=3537>

Home Codes and Maps History Downloads Submit Admin

Agency: Federal

US > Ohio Agency Last Updated

**US Forest Service**

Wayne National Forest

Frequency	License	Type	Tone	Description	Mode
164.70000	Federal			Marietta unit	FM
164.82500	Federal	RM	131.8 PL	Athens unit, Ironton Ranger District	FM
164.95000	Federal			Marietta unit	FM

**Law Enforcement**

FBI

Frequency	Input	Type	CH	Description	Mode
173.10000	162.73750	RM	A-01	Cincinnati Repeater - DVP	FM
173.15000	162.76250	RM	A-02	Cincinnati Repeater - DVP	FM
173.17500	167.48750	RM		Dayton Repeater	FM

**U.S. Army**

- In your browser highlight the area (hold down right mouse button and move mouse) you want to import:

Scanner Frequencies and Radio Frequency Reference for Federal - Microsoft Internet Explorer

Bestand Bewerken Beeld Favorieten Extra Help

Vorige Zoeken Favorieten

Adres <http://www.radioreference.com/modules.php?name=RR&aid=3537>

Home Codes and Maps History Downloads Submit Admin

Agency: Federal

US > Ohio Agency Last Updated

**US Forest Service**

Wayne National Forest

Frequency	License	Type	Tone	Description	Mode
164.70000	Federal			Marietta unit	FM
164.82500	Federal	RM	131.8 PL	Athens unit, Ironton Ranger District	FM
164.95000	Federal			Marietta unit	FM

**Law Enforcement**

FBI

Frequency	Input	Type	CH	Description	Mode
173.10000	162.73750	RM	A-01	Cincinnati Repeater - DVP	FM
173.15000	162.76250	RM	A-02	Cincinnati Repeater - DVP	FM
173.17500	167.48750	RM		Dayton Repeater	FM

**U.S. Army**

- Now in your browser press CTRL – C (or select EDIT \_ COPY from the top menu)
- Now go to ARC260 and click in the frequency column

- Click the right mouse button and select 'Paste Frequencies':

**ARC for Radioshack PR0433/528**

File Edit View Options PRO433/528 Internet Trunk Search Setup Help

7: Bank: 7    8: Bank: 8    9: Bank: 9    10: Bank: 10    Dummy  
 1: Bank: 1    2: Bank: 2    3: Bank: 3    4: Bank: 4    5: Bank: 5

	Freq. (MHz)	Trunk	Delay	Lock Out	Tag	Priority
1	164.70000					
2	164.82500					
3	164.95000					
4	173.10000					
5	162.73750					
6	173.15000					
7	162.76250					
8	173.17500					
9	167.48750					
10	163.43750					
11	163.02500					
12						
13						
14						
15						

## **2.9 Import/Export data:**

ARC260 can import data from various sources:

- import CSV data
- import using the clipboard: you can easily copy/paste data from Excel or other database software that supports the clipboard
- import frequencies from text/html/csv files. Use the Import CSV file option in the file menu.
- import directly from the [ww.radioreference.com](http://ww.radioreference.com) database.

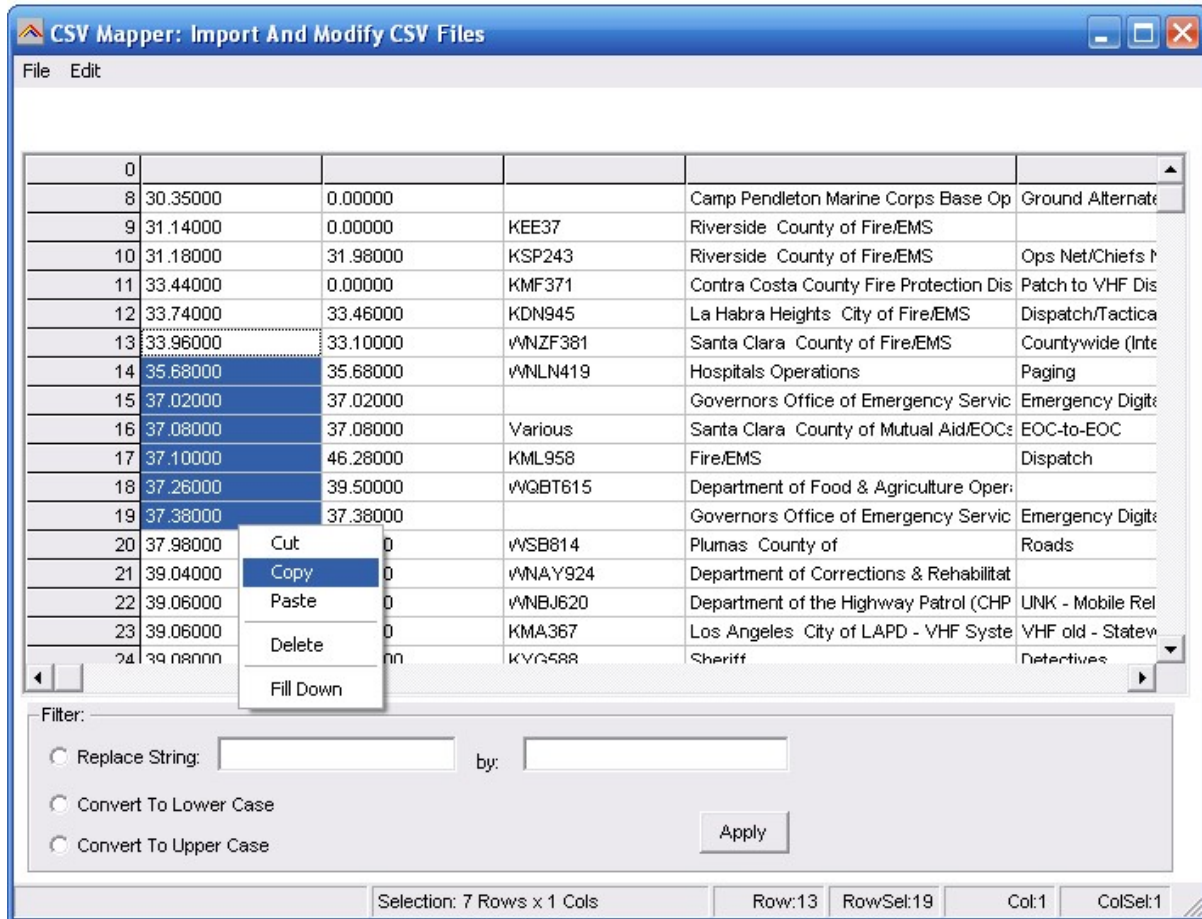
ARC260 can export data:

- CSV format: Select FILE \_ Export CSV data , then select the data you want to export and ARC260 will create a CSV file
- ARC260 fully supports the clipboard so you can copy/paste data from ARC260 into many other applications.

## 2.10 Import CSV files:

Select FILE \_ IMPORT \_ IMPORT CSV FILE. A new window is shown.

Select File \_ Open CSV file and browse for the CSV or text file that you want to import. The contents of the file will be shown in the grid. You can now simply copy data from this grid into the main editor grid:



You can make changes in the grid by using a double click.  
You can use copy/paste option.

The right mouse button will show a popup menu (see screenshot).

Below the grid you find filter options, use these filter options to replace strings and convert data to lower or upper case. To use the filter options you must first highlight items in the grid by holding down the left mouse button.

Sort: you can double click the column headers to sort the grid by frequency etc.

### **2.11 Checking for software updates**

For your convenience the software can check if a newer version of the ARC260 software is available (internet connection required).

Select HELP \_ CHECK FOR UPDATES.

The software will show a message if a newer version is available.



## **2.12 Sorting Data:**

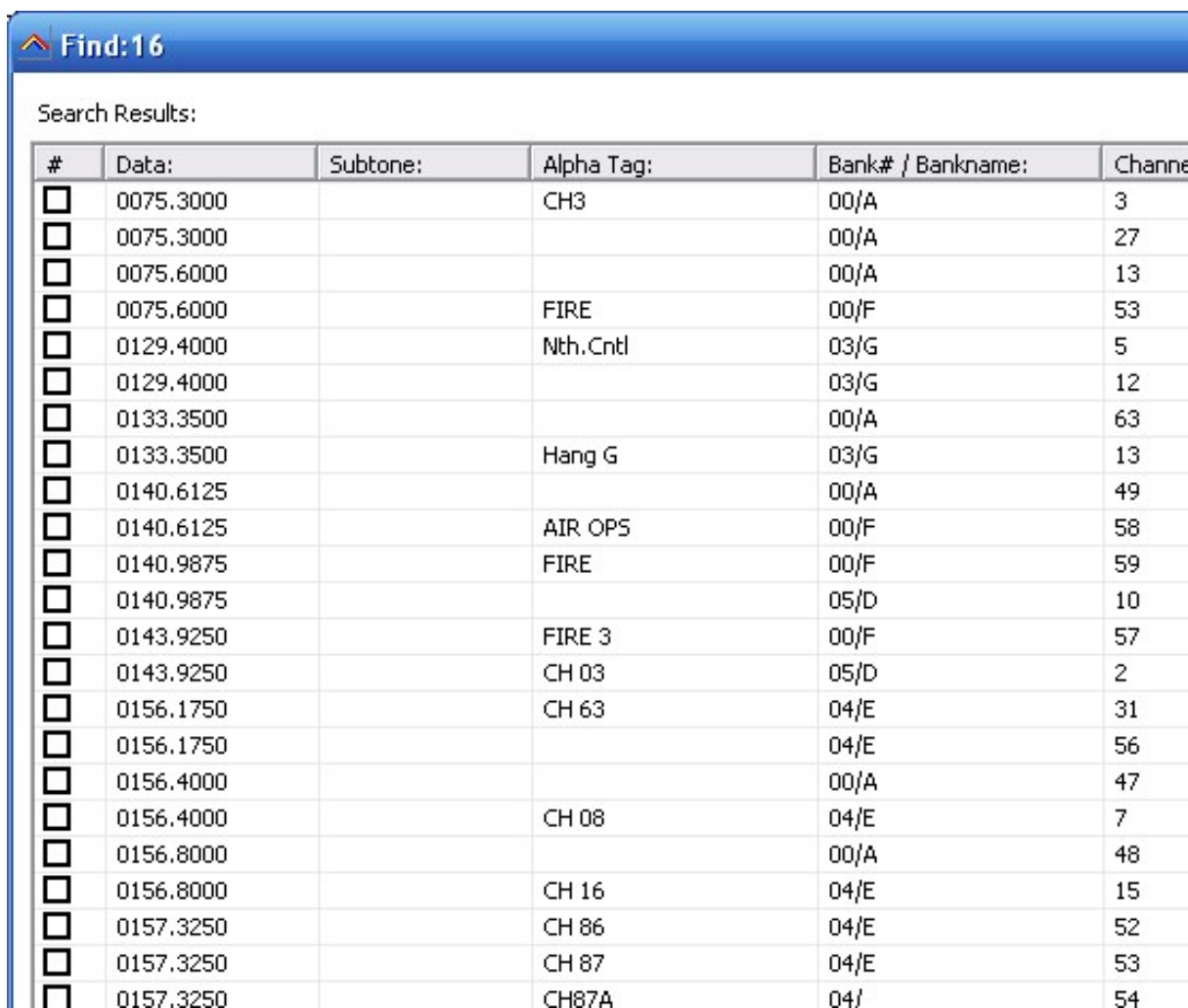
You can sort data by double clicking the header of the editor grid. Data will be sorted by the selected column.

### **2.13 Find/Remove duplicates:**

You can check for duplicates in the current bank or in all banks.

Select Options \_ Find Duplicates \_ In Current Bank/ All banks. You can also include the subtone.

A new window is shown with the result of the duplicate search:



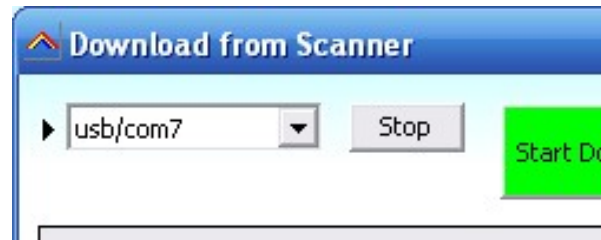
#	Data:	Subtone:	Alpha Tag:	Bank# / Bankname:	Channel
<input type="checkbox"/>	0075.3000		CH3	00/A	3
<input type="checkbox"/>	0075.3000			00/A	27
<input type="checkbox"/>	0075.6000			00/A	13
<input type="checkbox"/>	0075.6000		FIRE	00/F	53
<input type="checkbox"/>	0129.4000		Nth.Cntl	03/G	5
<input type="checkbox"/>	0129.4000			03/G	12
<input type="checkbox"/>	0133.3500			00/A	63
<input type="checkbox"/>	0133.3500		Hang G	03/G	13
<input type="checkbox"/>	0140.6125			00/A	49
<input type="checkbox"/>	0140.6125		AIR OPS	00/F	58
<input type="checkbox"/>	0140.9875		FIRE	00/F	59
<input type="checkbox"/>	0140.9875			05/D	10
<input type="checkbox"/>	0143.9250		FIRE 3	00/F	57
<input type="checkbox"/>	0143.9250		CH 03	05/D	2
<input type="checkbox"/>	0156.1750		CH 63	04/E	31
<input type="checkbox"/>	0156.1750			04/E	56
<input type="checkbox"/>	0156.4000			00/A	47
<input type="checkbox"/>	0156.4000		CH 08	04/E	7
<input type="checkbox"/>	0156.8000			00/A	48
<input type="checkbox"/>	0156.8000		CH 16	04/E	15
<input type="checkbox"/>	0157.3250		CH 86	04/E	52
<input type="checkbox"/>	0157.3250		CH 87	04/E	53
<input type="checkbox"/>	0157.3250		CH87A	04/I	54

The results are sorted by frequency. You can delete duplicates by ticking the box in front of the frequency. Select Dups automatically selects the duplicate frequencies.

### **2.14 Read data from receiver:**

In the menu select 'Scanner' 'Download from Scanner' or press F5.

1. Connect your scanner
2. Select the USB/COM port
3. Click 'Start Download'



### **2.15 Send data to Scanner:**

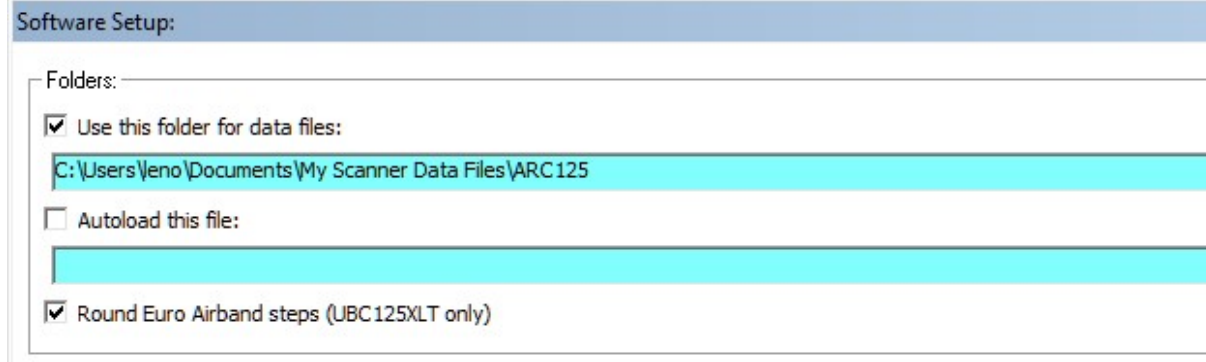
In the menu select 'Scanner' 'Upload to Scanner' or press F6.

1. Connect your scanner
2. Select the USB/COM port
3. Click 'Start Upload'

## **2.16 New airband steps:**

Goto Setup \_ Software options.

If you want the software to round to the new airband step enable the option "Round Euro Airband Steps". This option is only available for the UBC160 / UBC260 models.



Software Setup:

Folders:

☒ Use this folder for data files:

C:\Users\eno\Documents\My Scanner Data Files\ARC125

☐ Autoload this file:

☒ Round Euro Airband steps (UBC125XLT only)

Now when you enter a frequency from the new raster the software will automatically select the correct frequency:

Enter: 118.005 , the software will automatically set 118.0000

Note: these frequencies must be entered with 3 digits only!

Conversion table example (works from 118 MHz to 136 mHz) :

118.005	>>>	118.0000
118.010	>>>	118.0083
118.015	>>>	118.0166
118.030	>>>	118.0250
118.035	>>>	118.0333
118.040	>>>	118.0416
118.055	>>>	118.0500
118.060	>>>	118.0583
118.065	>>>	118.0666
118.080	>>>	118.0750
118.085	>>>	118.0833
118.090	>>>	118.0916

etc.



### **3 RadioReference Database import**

ARC can import frequencies directly from [www.radioreference.com](http://www.radioreference.com) , RadioReference is the largest and most accurate scanner database in the world.

We only support [www.radioreference.com](http://www.radioreference.com) webservice. We do support importing from [www.radioreference.co.uk](http://www.radioreference.co.uk) as they are not compatible with the official radioreference webservice.

For information about the database check out: <http://www.radioreference.com>

**IMPORTANT: To use the Radioreference import option you must subscribe to their services (only \$7.50 / 90 days)**

**IMPORTANT: you must allow the ARC software to access the internet through your firewall (port 80 only). Without access the import option will not work.**

The RR import may not work properly on satellite internet connections due to latency problems. Use dialup or DSL/Cable/WAN instead.

The RadioReference subscription is not included with ARC.

Importing conventional frequencies:

Open the RR import window and select your State. In this example we will import data from California, Alameda county:

Select California. This will load the CA County list, select Alameda:

The screenshot shows the 'RadioReference WebService - build 44' application window. At the top, there is a login section with 'UserName: rsdemo' and 'PassWord: [obscured]' fields, followed by a 'Connect' button. Below this, the 'State:' dropdown is set to 'CA / California' and the 'Country:' dropdown is set to 'USA'. A tree view on the left shows the selection path: 'CA' is expanded, and 'Alameda' is selected under the 'County:' label. The 'Agency:' field is empty. Below the tree view, there are three buttons: 'Conventional Frequencies' (highlighted in cyan), 'Agencies' (green), and 'Trunk Systems' (yellow). At the bottom of the window, there are three tabs: 'Data' (selected), 'Alpha Tag Options', and 'Trunk Options'. The 'Data' tab is currently empty. At the very bottom, there are two green buttons: 'Select All' and 'Unselect All'.

Now press the blue 'Conventional Frequencies' button. The software will now load all the frequencies from the selected county:

RadioReference WebService - build 44

UserName:  Password:

State:  Country:

County:   
Agency:

Select:

**Data** Alpha Tag Options Trunk Options

- ☐ Alameda, City of
- ☐ Albany, City of
- ☐ Berkeley, City of
- ☐ Businesses
- ☐ Dublin, City of
- ☐ East Bay Regional Parks District
- ☐ Emeryville, City of
- ☐ Federal
- ☐ Fremont, City of
- ☐ Hayward, City of
- ☐ Livermore, City of
- ☐ Military
- ☐ Municipal Services
- ☐ Newark, City of



Use the '+' symbol to see detailed frequency info:

**RadioReference WebService - build 44**

UserName:  PassWord:

State:  Country:

County:   
Agency:

Select:

**Data**

- ☐ **Alameda, City of**
- ☐ **Albany, City of**
  - ☐ **Fire / 1 Frequency**
    - ☐ 0154.3850 FM 118.8 PL [Albany FD] / Dispatch
  - ☐ **Police / 1 Frequency**
- ☐ **Berkeley, City of**
  - ☐ **Fire / 5 Frequencies**
    - ☐ 0153.8300 FM 131.8 PL [BerkeleyFD] /
    - ☐ 0153.9800 FM 131.8 PL [BerkeleyFD] /
    - ☐ 0154.1900 FM 131.8 PL [BerkeleyFD1] / Dispatch
    - ☐ 0154.3550 FM 131.8 PL [BerkeleyFD] /
    - ☐ 0154.4300 FM 131.8 PL [BerkeleyFD2] /
  - ☐ **Police / 11 Frequencies**
  - ☐ **Public Works / 4 Frequencies**

You can now select the frequencies that you want to import:

**RadioReference WebService - build 44**

UserName:  PassWord:

State:  Country:

County:   
Agency:

Select:

**Data**

- ☐ Alameda, City of
- ☐ Albany, City of
  - ☐ Fire / 1 Frequency
    - ☐ 0154.3850 FM 118.8 PL [Albany FD] / Dispatch
  - ☐ Police / 1 Frequency
- ☐ Berkeley, City of
  - ☒ Fire / 5 Frequencies
    - ☒ 0153.8300 FM 131.8 PL [BerkeleyFD] /
    - ☒ 0153.9800 FM 131.8 PL [BerkeleyFD] /
    - ☒ 0154.1900 FM 131.8 PL [BerkeleyFD1] / Dispatch
    - ☒ 0154.3550 FM 131.8 PL [BerkeleyFD] /
    - ☒ 0154.4300 FM 131.8 PL [BerkeleyFD2] /
  - ☐ Police / 11 Frequencies
  - ☐ Public Works / 4 Frequencies

We can now import this in the software by pressing the Import button.

**RadioReference WebService - build 44**

UserName:  Password:

State:  Country:

County:   
Agency:

Select:

**Data**    Alpha Tag Options    Trunk Options

- ☐ Alameda, City of
- ☐ Albany, City of
  - ☐ Fire / 1 Frequency
    - ☐ 0154.3850 FM 118.8 PL [Albany FD] / Dispatch
  - ☐ Police / 1 Frequency
- ☐ Berkeley, City of
  - ☒ Fire / 5 Frequencies
    - ☒ 0153.8300 FM 131.8 PL [BerkeleyFD] /
    - ☒ 0153.9800 FM 131.8 PL [BerkeleyFD] /
    - ☒ 0154.1900 FM 131.8 PL [BerkeleyFD1] / Dispatch
    - ☒ 0154.3550 FM 131.8 PL [BerkeleyFD] /
    - ☒ 0154.4300 FM 131.8 PL [BerkeleyFD2] /
  - ☐ Police / 11 Frequencies
  - ☐ Public works / 4 Frequencies

### **3.2 Radioreference Options:**



#### **1: Use Tag Filters:**

This option uses an external file to automatically filter/replace text tags. You can edit the file in notepad and define your own 'filter' rules.

Locate 'tagfilter.txt' and open in notepad, here are some filter examples:

```
"East","E"  
"West","W"  
"North","N"  
"South","S"  
"Police","PD"  
"Fire","FD"  
"Tactical","Tac"  
";",""
```

So 'East' will be replaced by 'E' etc. The ; character will be removed. You can define up to 1000 rules to filter text.

2: Remove spaces, tick this box if you want the software to automatically remove spaces from group and channel names

3: Do not modify: if the tag is 16 characters or less the software will not modify it since it fits the available space

## **4 General information and troubleshooting**

### **4.1 Revision history:**

ARC260 V2.0: added support for EU models

Build 1-4 : improved the profile editor